



PRIMER

Inverter



HIGH EFFICIENCY INVERTER

Split System 5-12.5 Tons

Light Commercial

TYH/TYK/TYA R410A Series 50Hz

TRANE
TECHNOLOGIES



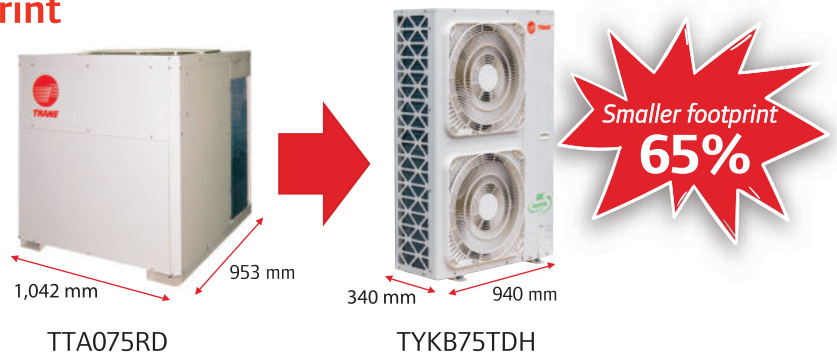
High Energy Efficiency System



- The introduction of a high efficiency DC Inverter compressor driven by the most advanced control technology is designed to provide more precise operation and improved system efficiency to reach maximum SEER 15.2 (averagely improved 49% from Fixed speed type). The compressor speed is adapted to match the fluctuating cooling load of the buildings while ensuring the appropriate variable supply of cooling.

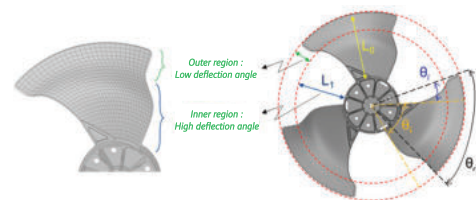
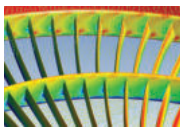
Space Saving with Smaller Footprint

- Trane PRIMER Inverter is designed for smaller condensing unit dimensions to save the installation space at maximum of 65% from current product.



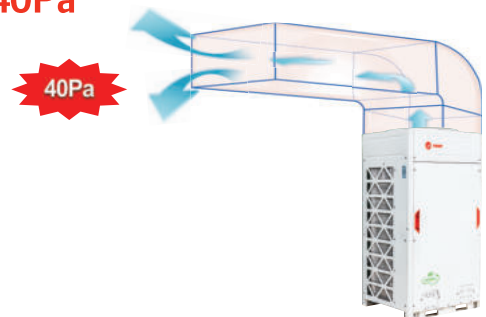
Low Operation Sound Noise

- Trane PRIMER Inverter optimally designed fan shape, new designed discharge air grille and air deflector together supply higher air volume and lower operation sound.



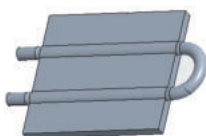
External Static Pressure of Outdoor Units Up to 40Pa

- DC fan motor can enhance External Static Pressure of the outdoor fan. Be adjustable up to maximum 40 Pa which can apply discharge duct for hot air to avoid obstruction in front of the outdoor unit.

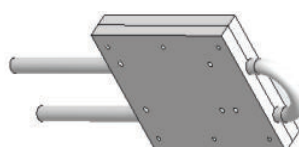


High Reliability with New Refrigerant Cooled PCB Technology

- New full package for top discharge and Micro Channel Radiator for side discharge design to enhance heat transfer area and decrease temperature by 15 °C.



Old : Crimping



New for Top : Full Package



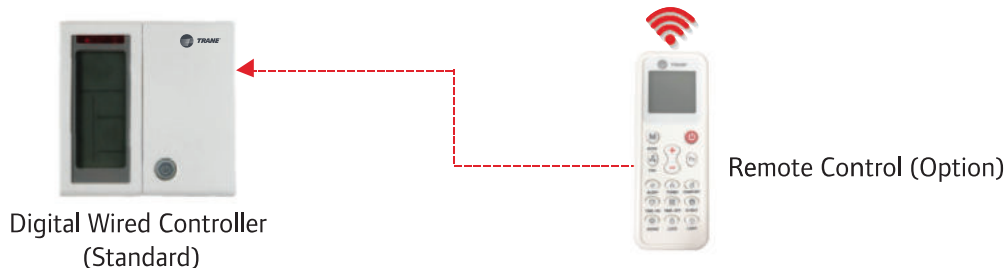
New for Side : Micro Channel Radiator

Easy service and maintenance

- Self - Diagnostic system shows error codes for the causes of malfunction which help reduce service time.

Completed DOL Starter and Controller

- Factory completed build-in DOL starter and digital wired controller.



TYH Air Handling Unit

- For horizontal air discharge.
- Powder paint finished casing.
- Belt drive.
- Electronic Expansion Valve.
- Factory installed PCB, DOL starter and display wired controller.
- Suitable for ducted application (fan motor hp output will be specially selected to properly match with Free blow application).



TYK/TYA Condensing Unit

- Powder paint finished casing.
- External current overload for compressor, Hi/Low pressure, temperature protection, phase protection (Missing phase/Phase loss/Under and Over voltage protection).
- Fully charged R410A refrigerant with shut-off valve.



Product Specifications

| UNIT MODELS | Indoor unit | | TYH060JDH | TYH075JDH | TYH100JDH | TYH120JDH | TYH160JDH |
|--------------------|-----------------------------|---------|--|---------------------------|-----------------------------|-----------------------------|-----------------------------|
| | Outdoor unit | | TYKB60TDH | TYKB75TDH | TYA100JDH | TYA120JDH | TYA150JDH |
| Electrical Data | Power Supply | V/Ph/Hz | 380-415/3/50 | | | | |
| Performance Data | Cooling Capacity (Min-Max) | Btu/h | 60,000 (30,000-65,000) | 75,000 (35,000-80,000) | 100,000 (45,000-108,000) | 120,000 (50,000-130,000) | 150,000 (70,000-160,000) |
| | SEER | Btu/h/W | 15.20 | 14.40 | 14.10 | 14.05 | 14.30 |
| | Nominal Airflow | CFM | 2,000 | 2,500 | 3,400 | 4,000 | 5,300 |
| System Data | Refrigerant Type | | R410A (Fully charged) | | | | |
| | No. of Refrigerant Circuits | | 1 | 1 | 1 | 1 | 1 |
| | Refrigerant Connection Type | | BRAZE | BRAZE | BRAZE | BRAZE | BRAZE |
| | Suction Line OD | in (mm) | 7/8" | 7/8" | 7/8" | 1 1/8" | 1 1/8" |
| | Liquid Line OD | in (mm) | 3/8" | 3/8" | 1/2" | 1/2" | 5/8" |
| | Drain Connection Size | in (mm) | 1 (25.4) | 1 (25.4) | 1 (25.4) | 1 (25.4) | 1 (25.4) |
| | Drain Connection Type | | Steel Pipe - MPT | | | | |
| Indoor Units | | | | | | | |
| Flow Control | Type | | Electronic Expansion Valve | | | | |
| Fan | Fan Type | | Double Inlet Centrifugal with Forward Curved Wheel | | | | |
| | Qty | | 1 | 1 | 2 | 2 | 2 |
| | Drive Type | | Belt-Drive | | | | |
| Fan Motor | Output | kW | 3/4 (0.55) | 1 (0.75) | 2 (1.5) | 2 (1.5) | 2 (1.5) |
| | Qty x RLA | A | 1.45 | 1.89 | 3.53 | 3.53 | 3.53 |
| Air Filter | Type | | 1- In Washable Air Filter | | | | |
| Dimensions (HxWxD) | Unit (Net) | mm | 520x1,465x916 | | 521x1,833x916 | 620x1,833x916 | 798x2,088x1,260 |
| Weight | Unit (Net) | kg | 90 | 94 | 138 | 143 | 175 |
| Outdoor Units | | | | | | | |
| Compressor | Type | | Twin Rotary DC Inverter | | Scroll DC Inverter | | |
| | Qty x RLA | | 9.80 | 13.91 | 17.40 | 20.25 | 23.38 |
| Fan | Fan Type | | Propeller | | | | |
| | Hot Air Discharge Direction | | Horizontal (Front) | | Vertical Discharge (Top) | | |
| | Qty | | 2 | 2 | 1 | 1 | 2 |
| Fan Motor | Type | | DC Motor | | | | |
| | Output | Watt | 100 | 250 | 750 | 750 | 750 |
| | Qty x RLA | A | 2x1.26 | 2x1.35 | 3.39 | 3.43 | 2x2.16 |
| Dimension (HxWxD) | Unit (Net) | mm | 1,430x940x340 | | 1,720x925x785 | | 1,720x1,295x785 |
| Weight | Unit (Net) | kg | 102 | 113 | 196 | 215 | 232 |

- Note:
1. Capacity is rated at ARI conditions of 80 °FDB /67 °FWB for Indoor & 95 ° FDB for Outdoor.
 2. Outdoor unit dimensions depth is not included the dimensions of unit's legs.
 3. Product design and specification are subject to change without notice.



Trane (Thailand)

1126/2, 30th-31st Fl., Vanit Building 2, New Petchburi Road, Makkasan, Ratchthevee, Bangkok, 10400

☎ 0-2761-1111

